

Waterfalls

Laurel Falls

80-foot high Laurel Falls is named for mountain laurel which blooms along the trail in May. The paved trail is 2.6 miles roundtrip and considered moderate in difficulty.

Access trail: Laurel Falls Trail

Trailhead: from Sugarlands Visitor Center, turn towards Cades Cove on Little River Road and drive 3.9 miles to the trailhead. Limited parking is on either side of the road.

Tom Branch Falls/Indian Creek Falls

An easy 1.6 mile roundtrip hike will allow you to enjoy two beautiful waterfalls in the Deep Creek area. Walk Deep Creek Trail 0.7 mile to the junction with Indian Creek Trail. On your way you can view elegant 80-foot Tom Branch Falls located on the far side of Deep Creek. Turn right at the junction with Indian Creek Trail and proceed approximately 200' to Indian Creek Falls. The falls are 25 feet high.

Access trail: Deep Creek/Indian Creek

Trailhead: Follow the signs through downtown Bryson City to Deep Creek Campground. Continue past the campground to the trailhead at the end of Deep Creek Road.

Juney Whank Falls

Juney Whank Falls is divided into an upper and lower section. Both can be viewed from the footbridge which crosses Juney Whank Branch at the falls. Together they drop 90 feet from top to bottom. The trail to the waterfall is 0.8 mile roundtrip and is considered moderate in difficulty.

Access trail: Juney Whank Falls Trail

Trailhead: Follow the signs through downtown Bryson City to Deep Creek Campground. Continue past the campground to the trailhead at the end of Deep Creek Road.

Rainbow Falls

A rainbow produced by mist from this 80-foot high waterfall is visible on sunny afternoons. Between trailhead and falls, the trail gains about 1,500' in elevation. The 5.4 mile roundtrip hike is rated moderate in difficulty.

Access trail: Rainbow Falls Trail

Trailhead: Follow Historic Nature Trail (traffic light #8) in Gatlinburg into the national park. Continue past the Noah "Bud" Ogle homesite to the clearly signed Rainbow Falls parking area.

Mingo Falls

Mingo Falls is on the Cherokee Indian Reservation just outside the national park. This waterfall, at 120 feet, is one of the tallest and most spectacular in the southern mountains. The hike to the waterfall is only 0.4 mile, but is rated moderate in difficulty.

Access trail: Pigeon Creek Trail

Trailhead: From Oconaluftee Visitor Center, drive south (toward Cherokee) on US-441 and take the second left onto Big Cove Road. At the first stop sign turn left and drive 4.5 miles to Mingo Falls Campground, where the trail begins.



Do not climb on waterfalls!

Auto Touring

Newfound Gap Road (33 miles, paved)

This heavily used U.S. highway crosses Newfound Gap (5,046' elevation) to connect Cherokee, NC and Gatlinburg, TN. Highlights include numerous pullouts with mountain views and a variety of forest types as you ascent approximately 3,000 feet up the spine of the mountains.

Clingmans Dome Road (7 miles, paved: closed in winter)

This spur road follows a high ridge to a paved walking trail that leads 0.5 mile to the park's highest peak. Highlights are mountain views and the cool, evergreen, spruce-fir forest.

Little River Road (18 miles, paved)

This road parallels the Little River from Sugarlands Visitor Center to near Townsend, TN. Highlights include the river, waterfalls, and wildflowers.

Roaring Fork Motor Nature Trail (6 miles, paved; closed in winter. Buses and RVs are not permitted on the motor nature trail.)

A steep, narrow and scenic route through deep forest and historic farmsteads. From downtown Gatlinburg, turn at traffic light #8 and follow Historic Nature Trail-Airport Road into the national park.

The Road to Nowhere (8 miles, paved)

A scenic mountain highway that takes you eight miles into the Great Smoky Mountains National Park and ends at the mouth of a tunnel. Take Highway 19 into Bryson City and turn onto Everett Street. In just a few miles you will enter the national park. Highlights include views of Fontana Lake.

For up-to-the-minute park weather and road information call 865-436-1200

Additional Information

Pets

Dogs are allowed in campgrounds, picnic areas and along roads, but must be kept on a leash at all times. The leash must not exceed 6 feet in length. Dogs are allowed on two walking paths – the Gatlinburg Trail and the Oconaluftee River Trail. Pets are not allowed on any other park trails.

Camping

The National Park Service maintains developed campgrounds at ten locations in the park. Each campground has restrooms with cold running water and flush toilets, but there are no showers or electrical or water hookups in the park. For reservations and more information call 1-877-444-6777.

Backpacking Permits

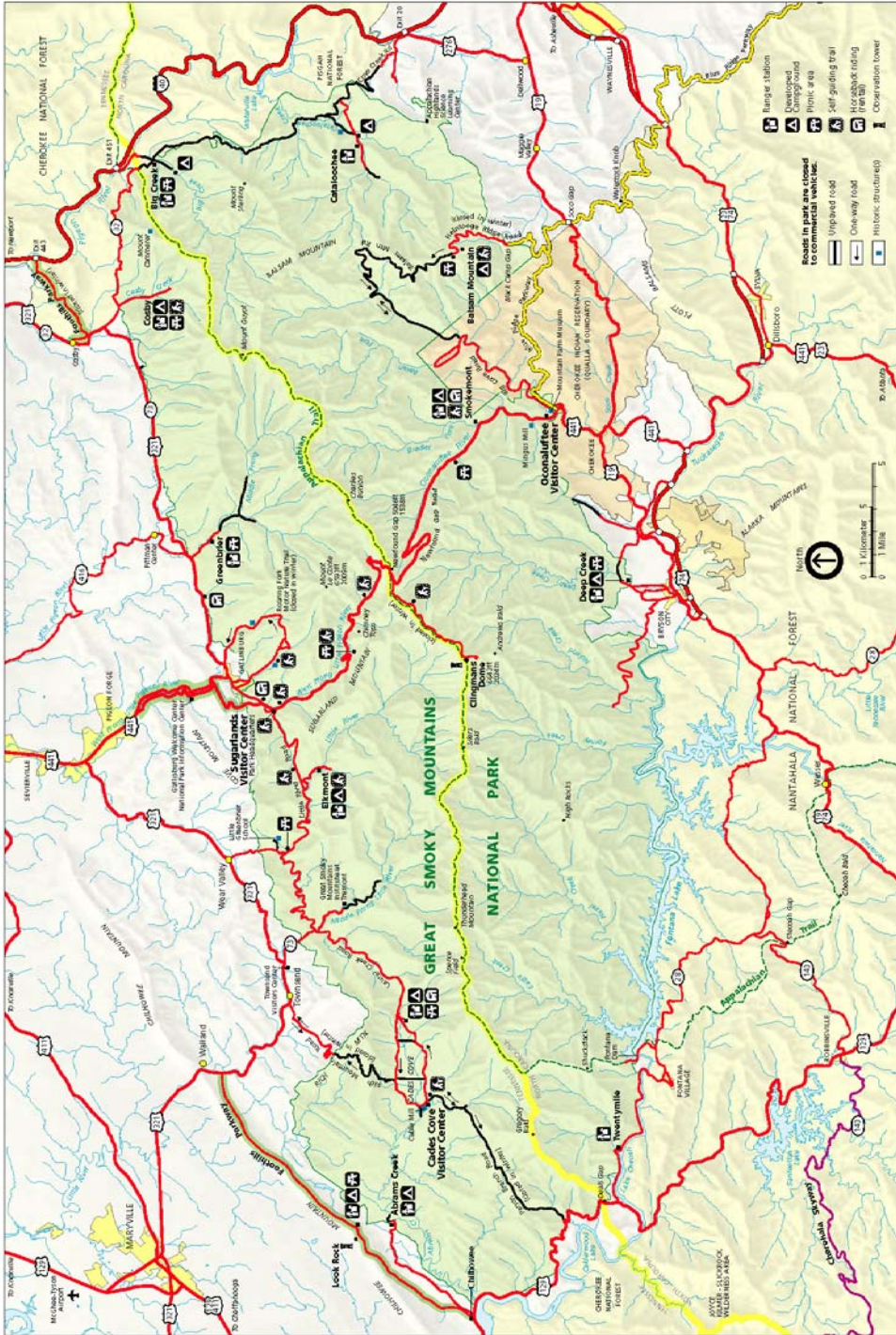
A permit is required for all backcountry camping in the park. You must stay at designated campsites and shelters while camping in the backcountry. For more information contact the Backcountry Information Office at 865-436-1297

For more information visit one of the park's visitor centers;

Sugarlands near Gatlinburg and Oconaluftee near Cherokee.

Information in this guide is from the **Smokies Trip Planner** published by the National Park Service. The complete guide can be found at www.nps.gov/grsm.

National Park Map



Great Smoky Mountains National Park Quick Reference Guide

Favorite Destinations

Cades Cove

Highlights: historic buildings, wildlife viewing

Cades Cove is a lush valley surrounded by mountains and one of the most popular destinations in the park. An 11-mile one-way loop road takes you around the cove. Traffic will be heavy during the tourist season. Numerous trails originate in the cove, including the five-mile roundtrip to Abrams Falls and the short Cades Cove Nature Trail.

Cataloochee

Highlights: historic buildings, wildlife viewing

Encircled by rolling blue mountains, Cataloochee is a secluded valley rich in cultural heritage. Elk can often be seen in the fields of the valley.

Clingmans Dome

Highlights: mountain views, high elevation spruce-fir forest

At 6,643 feet, Clingmans Dome is the highest peak in the Smokies. On clear days the observation tower on the summit of the mountain offers spectacular 360 degree views. The trail to the summit is paved but steep. Other trails in the area include Forney Ridge, the Appalachian Trail and Clingmans Dome Bypass.

Oconaluftee

Highlights: historic buildings, visitor center

Oconaluftee is both a visitor center and the Mountain Farm Museum – a collection of historic log buildings gathered from throughout the Smoky Mountains and preserved on a single site. Rangers can answer your questions and there is a bookstore with a broad selection of guides, maps and other products. The easy Oconaluftee River Trail begins near the entrance to the museum (stroller accessible and pet friendly).

Mingus Mill

Highlights: historic building, working mill

A large water-powered mill for grinding corn can be seen in operation from mid-April through October. One-half mile north of the Oconaluftee Visitors Center on US 441.

Deep Creek

Highlights: waterfalls, tubing, trails and picnic area

Cool mountain creeks and shade make this a popular destination during the summer months. There are several tubing outfitters along West Deep Creek Road just outside of Bryson City.

National Park Visitor Centers

Sugarlands 865-436-1291 • Oconaluftee 828-497-1904

See map on back for locations mentioned in this guide

